

## TECHNICAL DATA SHEET FOR LOCKFAST EPOXY STICK QUICK REPAIR

### Description

Lockfast Quick Repair is a hand-mixable, fast-setting epoxy putty for quick, permanent repairs to glass, ceramics, metals, concrete, wood, and numerous plastics. After mixing it forms an industrial-strength polymer compound for numerous repairs around the home or workshop. Each handy stick contains pre-measured portions of activator and base throughout, no measuring or mixing tools are necessary. Just cut, mix, and apply. The consistency (like modeling clay) eliminates drips and runs, molds easily, facilitates adhesion to the substrate, and allows the material to be shaped and formed as needed before curing begins.

### Basic uses

Use Lockfast Quick Repair to repair and replace broken or loose wall and floor tile; to anchor bolts, rods, screws, machines and housings; to adhere cove moldings and smoke detectors; for electrical use in place of tape, ceramic, or plastic connectors; and to fabricate small parts, handles, knobs, and missing detail. Use it for auto repairs such as bonding trim, repairing small dents, filling rust holes, sealing leaks in oil pans, and as a thread lock. Quick Stick seals leaks in downspouts and gutters; mends toys; fills cracks in refrigerator interiors; rebuilds worn lawn mowers, sports equipment, and missing bumpers on luggage; seals air conditioning coils and ducts; patches chipped concrete, floors, bricks, and blocks; and attaches fixtures, machine tags, and signs.

### Packaging

Lockfast Quick Repair is supplied in a stick form wrapped in a clear release film. The stick has a nominal 22mm diameter and is available in various lengths. Packaged in a reusable clear plastic tube with a plastic friction top.

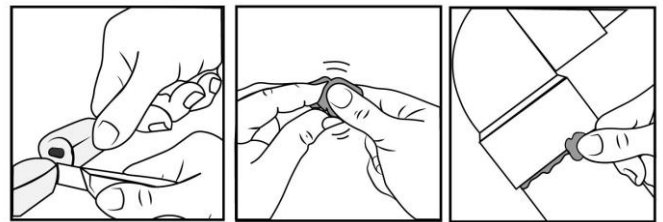
### Shelf Life

Lockfast Quick Repair should be stored out of direct sunlight in dry frost free conditions of temperatures between 5°C and 20°C. Under such conditions shelf life will be 24 months from the date of manufacture. One year minimum from date of shipment when stored in original, unopened container in a dry area at temperatures below 75°F (24°C).

### Directions of use

1. In order to achieve optimum adhesion, surfaces should be cleaned free of grease, dirt, paint etc., and preferably should be dry. To ensure a good bond, abrade both surfaces followed by additional cleaning.
2. Twist or cut off the required amount of Quick Stick.
3. If the material is cold mixing may be difficult, and warming to room temperature is advised.
4. To mix, knead the putty with the fingers for at least one minute or until it is a uniform colour.

5. Press the putty onto the prepared surface within 2 minutes of mixing.
- 6.1. If being used to repair a slowly-leaking area work the putty forcefully into the surface and apply pressure for at least 20 minutes, until adhesion begins to take effect.
- 6.2. If it is being used as a filler/repair material force the putty into the area to be filled, and shape and strike off any excess with a tool wetted with clean water.
7. For a smooth appearance rub with water or a damp cloth within the working life of the putty.
8. After 3-5 minutes the epoxy putty will harden like metal and start to form a bond. After 60 minutes the material will be cured sufficiently to allow a repaired water system to be put back into service.  
Full cure will be achieved after 24 hours.



### Health precautions

- Contains Epoxy Resin. Epoxies are skin/eye irritants and known sensitizers. Direct product contact may cause an allergic reaction in some individuals. Avoid skin/eye contact. Wear impermeable gloves when mixing or handling uncured product.
- Inhalation of dust may be harmful. Avoid inhalation of dust. Wear dust mask and protective eyewear when sanding cured product.
- Ingestion of product may be harmful. Avoid ingestion.
- Turn off power when doing electrical repairs.
- KEEP OUT OF THE REACH OF CHILDREN.

For additional health and safety information, consult a Safety Data Sheet.

### Important Note

Whilst all reasonable care is taken in compiling technical data on the Company's products, all recommendations or suggestions regarding the use of such products are made without guarantee, since the conditions of use are beyond the control of the Company. It is the customer's responsibility to satisfy himself that each product is fit for the purpose for which he intends to use it, that the actual conditions of use are suitable and that in the light of our continual research and development programme the information relating to each product has not been superseded.

**TECHNICAL DATA SHEET FOR LOCKFAST CELEMEND QUICK REPAIR**

Properties	Results	Test Methods
Work life	3 - 5 minutes @ 24°C	
Shore D Hardness	75	ASTM D2240
Lap shear strength on Concrete	6.2N/mm <sup>2</sup>	ASTM D1002
Shrinkage	<1%	ASTM D2566
Temperature Limitations	121°C Continuous 149°C intermittent	
Dielectric strength	11,800 V/mm	ASTM D149
Compressive strength	55N/mm <sup>2</sup>	ASTM D695
<b>Chemical resistance:</b> Resistant to hydrocarbons, Ketones , alcohols, esters, halocarbons, aqueous salt solutions, dilute acids and bases.		

\*Typical properties are for information only, not for purposes of specification. The data above represents product performance in ideal laboratory conditions. Individual users' experience may vary depending on application conditions.

**CYANOTEC LTD**

Bay 2, Building 62, Third Avenue, Pensnett Trading Estate, Kingswinford, DY6 7XT  
TEL 01384 294753 FAX 01384 297908 EMAIL [sales@cyanotec.com](mailto:sales@cyanotec.com)

**Epoxy Stick  
Quick  
Repair  
V1.0  
Jan 19**